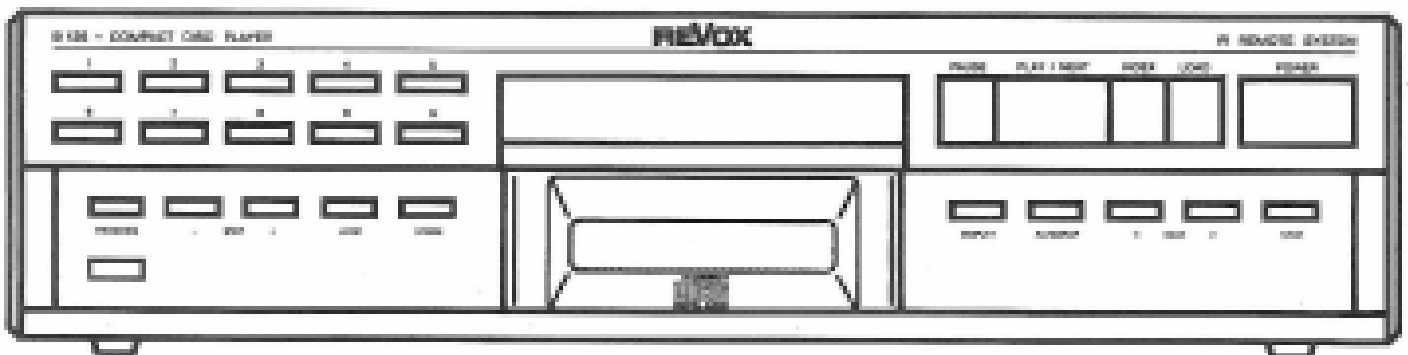


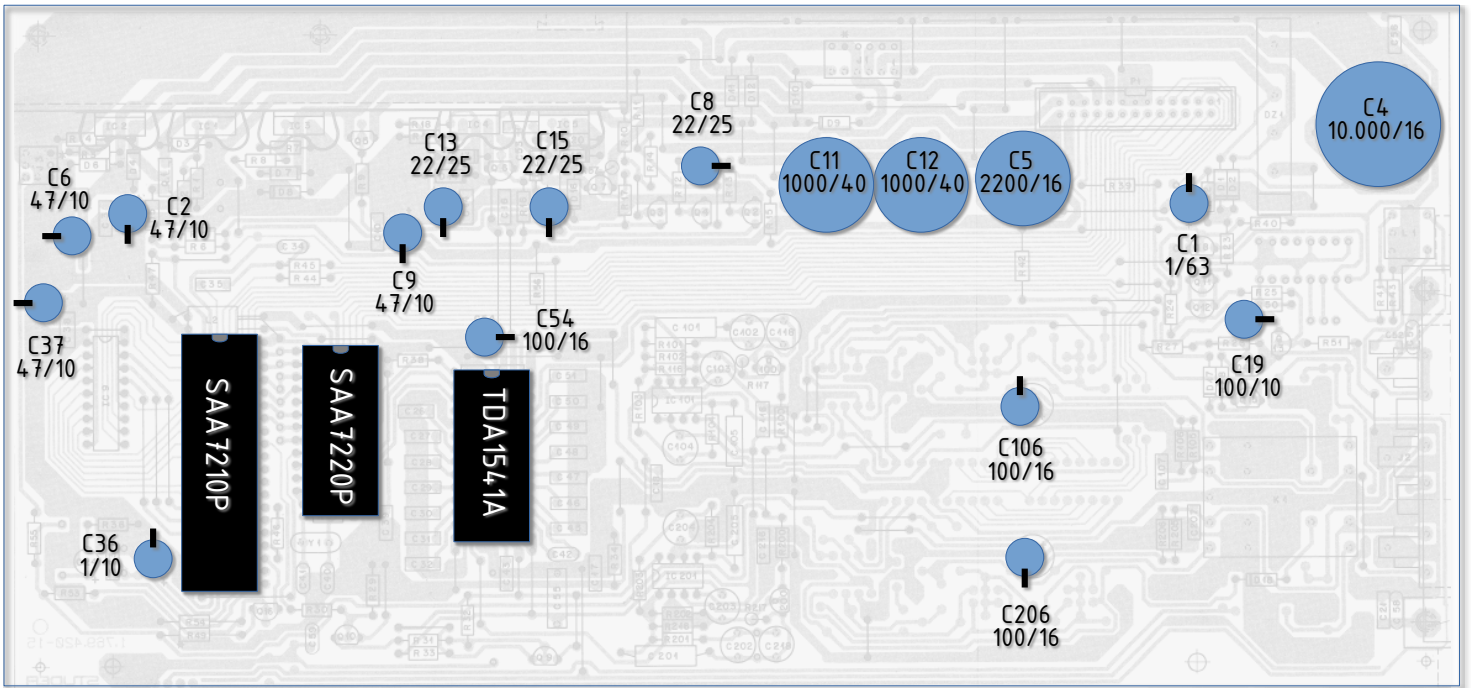
Quick Reference Guide to Revox B126:

Page:

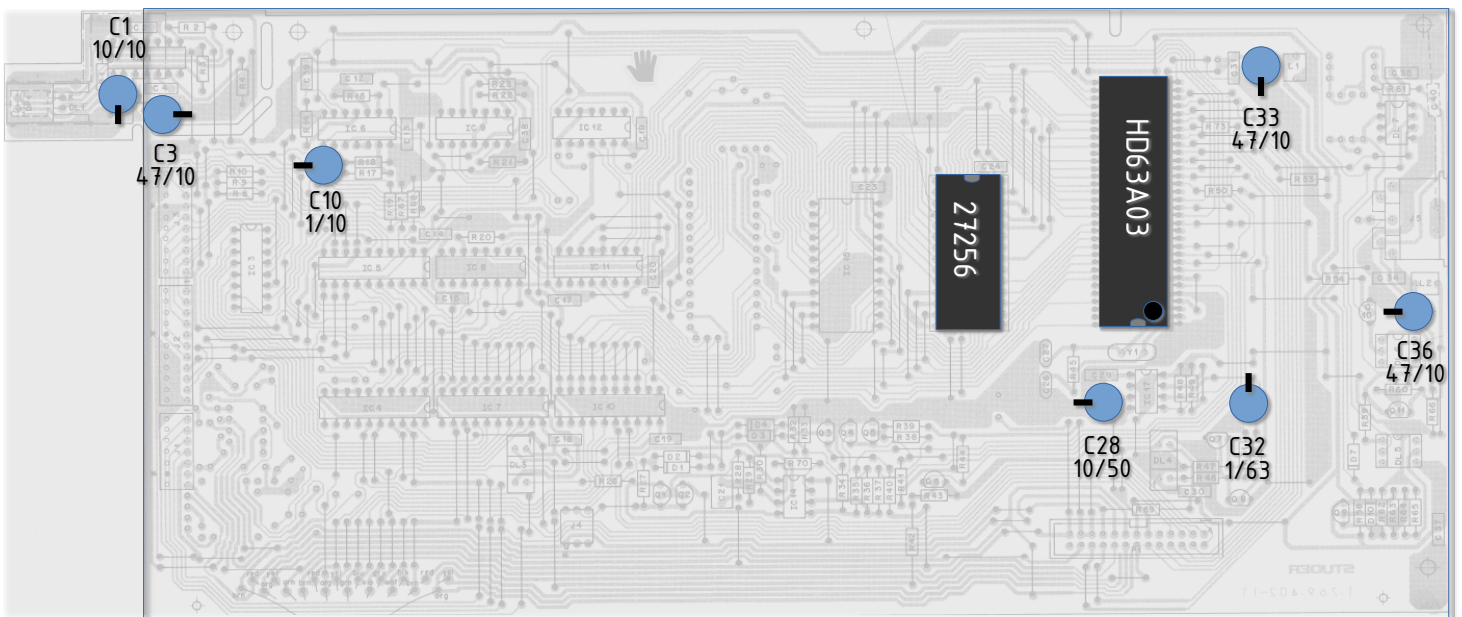
- 2 Location of caps on Decoder and MPU PCB
- 3 Adjust voltage setting 220V → 240V



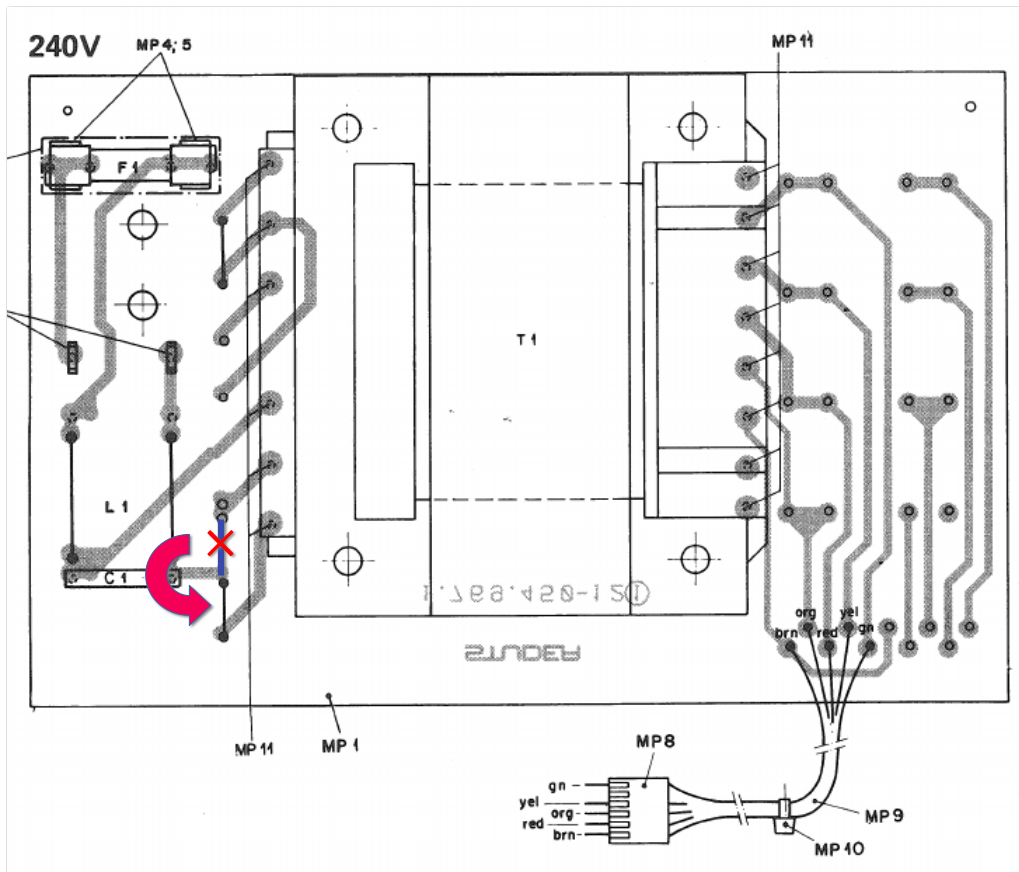
Decoder PCB 1.769.421



Microprocessor PCB 1.769.402



Adjust voltage setting



To adjust the player from 220V to 240V do the following:
Remove the blue wire bridge and place it in the position indicated by the arrow.

